

English

This term, in English we will be using the text 'Orphans of the Tide' by Struan Murray.

Our outcome at the end of the half term will be to write our own persuasive letter outlining why whaling should be banned. We will be focusing on how to persuade our reader to agree with us using a range of persuasive devices.

To achieve this we will include:

- Emotive language
- Rhetorical questions
- Formal tone
- Facts and statistics.

Maths

Fractions, Decimals and Percentages

- Multiplying and dividing decimals by integers including in context.
- Decimal and fraction equivalents
- Percentages
- Equivalent decimals, fractions and percentages

Measurement

- Area and Perimeter
- Area of a triangle
- Volume

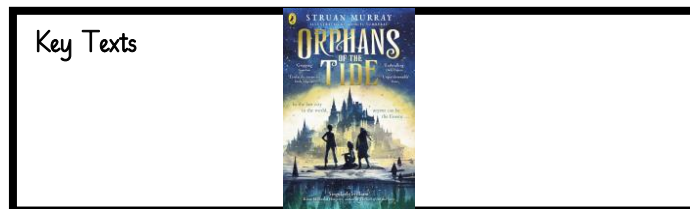
Statistics

- Graphs and Charts
- The mean

Science

Our Science topic this half term is 'Electricity.'

- associate the brightness of a lamp or the volume of a buzzer with the number and voltage of cells used in the circuit
- compare and give reasons for variations in how components function, including the brightness of bulbs, the loudness of buzzers and the on/off position of switches
- use recognised symbols when representing a simple circuit in a diagram.



Humanities

In geography, we will be looking at the hazards of the world.

This includes:

- The structure of the earth
- Plate boundaries
- Earthquakes
- Volcanoes
- 2011 Earthquake and Tsunami in Tōhoku
- Protecting against hazards

Art and Design

- To experiment with different paint techniques – pointillism, brush strokes, wash, blending and stippling – recall prior knowledge on different brush types if applicable
- To be able to analyse a paint artist (Daniel Mackie) using keywords to show understanding
- To apply knowledge and skills to develop a painting outcome linked to theme

RE

Topic 5 – Unity

Topic 6 – Death and New Life

We will be looking at how Christians live in unity with each other, in the image of how Jesus taught us.

We will also be looking at the death and resurrection of Jesus, including the impact of this on Christians in daily life.

PE – Net and Wall Games

PSHE- Drug Education, seeing stuff online and Alright Charlie?

Music – Exploring notation further

MFL – Places in town and dates

Computing – Creating instructional videos

Key Information for Spring Term 2 (Year 6):

PE days – Our PE day for this half term is Thursday

Homework days- Homework will be given on a Friday and needs to be submitted by the following Friday on SeeSaw

Parents evenings on Monday 25th March and Wednesday 27th March